

ROAD INDEX

I	R		
J	S		
K	T		
L	U		
M	V		
N	W		
O	X		
P	Y		
Q	Z		

① HAMB DEN ELEMENTARY SCHOOL
 ② HAMB DEN CONGREGATIONAL CH.
 ③ CHRISTIAN & MISSIONARY ALLIANCE CH.
 ④ HAMB DEN CEMETERY
 ⑤ HAMB DEN VOL. FIRE DEPT.
 ⑥ HAMB DEN TOWN HALL

HAMB DEN TOWNSHIP

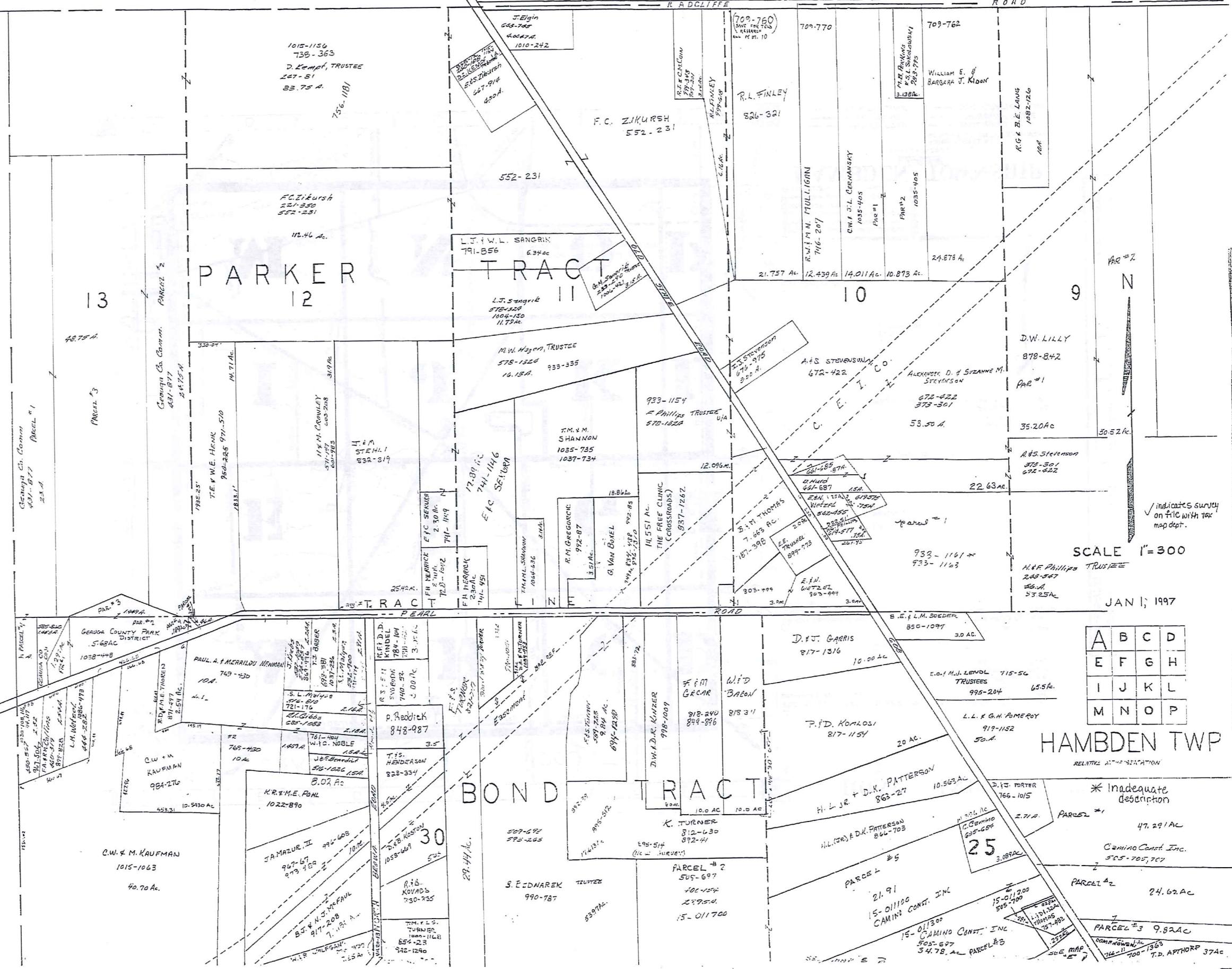
SCALE = 1" = 2000'
 ROBERT L. PHILLIPS,
 GEORGIA COUNTY ENGINEER

— UNPAVED ROAD — RAILROAD
 — PAVED ROAD - - - TOWNSHIP LINE
 - - - COUNTY LINE - - - CORPORATION LINE

TRM-REDJ
 1-800-345-7334
 SCALE IN 1/10 OF AN INCH

L A K E C O U N T Y

P
T
W
D
O
N
A
R
D
O
N
C
H



PARKER TRACT II

BOND TRACT

HAMBDEN TWP

TRIM-REDI
1-800-345-7334
SCALE 1/4" = 100'
SCALE IN 7/16" OF AN INCH

SCALE 1" = 300

A	B	C	D
E	F	G	H
I	J	K	L
M	N	O	P

* Inadequate description

47.29 AC
Gamino Const. Inc.
505-705,707

24.62 AC

PARCEL #3 9.82 AC

34.78 AC PARCEL #3

700-1368
T.D. APPOPP 37 AC

Indicates survey on file with tax map dept.

JAN 1, 1997

RELATIVE AT-TO-SECTION

PARCEL #1

PARCEL #2

PARCEL #3

PARCEL #3

PARCEL #3

PARCEL #3

PARCEL #3

PARCEL #3

PARCEL #3

PARCEL #3

PARCEL #3

PARCEL #3

PARCEL #3

PARCEL #3

PARCEL #3

PARCEL #3

PARCEL #3

PARCEL #3

PARCEL #3

PARCEL #3

PARCEL #3

PARCEL #3

PARCEL #3

PARCEL #3

PARCEL #3

PARCEL #3

PARCEL #3

PARCEL #3

PARCEL #3

PARCEL #3

PARCEL #3

PARCEL #3

PARCEL #3

PARCEL #3

PARCEL #3

PARCEL #3

PARCEL #3

PARCEL #3

PARCEL #3

PARCEL #3

PARCEL #3

PARCEL #3

PARCEL #3

PARCEL #3

PARCEL #3

PARCEL #3

PARCEL #3

PARCEL #3

PARCEL #3

PARCEL #3

PARCEL #3

PARCEL #3

PARCEL #3

PARCEL #3

PARCEL #3

PARCEL #3

PARCEL #3

PARCEL #3

PARCEL #3

PARCEL #3

PARCEL #3

PARCEL #3

PARCEL #3

PARCEL #3

PARCEL #3

PARCEL #3

PARCEL #3

PARCEL #3

PARCEL #3

PARCEL #3

PARCEL #3

PARCEL #3

PARCEL #3

PARCEL #3

PARCEL #3

PARCEL #3

PARCEL #3

PARCEL #3

PARCEL #3

PARCEL #3

PARCEL #3

PARCEL #3

PARCEL #3

PARCEL #3

PARCEL #3

PARCEL #3

PARCEL #3

PARCEL #3

PARCEL #3

PARCEL #3

PARCEL #3

PARCEL #3

PARCEL #3

PARCEL #3

PARCEL #3

PARCEL #3

PARCEL #3

PARCEL #3

PARCEL #3

PARCEL #3

PARCEL #3

PARCEL #3

PARCEL #3

PARCEL #3

PARCEL #3

PARCEL #3

PARCEL #3

PARCEL #3

PARCEL #3

PARCEL #3

PARCEL #3

PARCEL #3

PARCEL #3

PARCEL #3

PARCEL #3

PARCEL #3

PARCEL #3

PARCEL #3

PARCEL #3

PARCEL #3

PARCEL #3

PARCEL #3

PARCEL #3

PARCEL #3

PARCEL #3

PARCEL #3

PARCEL #3

PARCEL #3

PARCEL #3

PARCEL #3

PARCEL #3

PARCEL #3

PARCEL #3

PARCEL #3

PARCEL #3

PARCEL #3

PARCEL #3

PARCEL #3

PARCEL #3

PARCEL #3

PARCEL #3

PARCEL #3

PARCEL #3

PARCEL #3

PARCEL #3

PARCEL #3

PARCEL #3

PARCEL #3

PARCEL #3

PARCEL #3

PARCEL #3

PARCEL #3

PARCEL #3

PARCEL #3

PARCEL #3

PARCEL #3

PARCEL #3

PARCEL #3

PARCEL #3

PARCEL #3

PARCEL #3

PARCEL #3

PARCEL #3

PARCEL #3

PARCEL #3

PARCEL #3

PARCEL #3

PARCEL #3

PARCEL #3

PARCEL #3

PARCEL #3

PARCEL #3

PARCEL #3

PARCEL #3

PARCEL #3

PARCEL #3

PARCEL #3

PARCEL #3

PARCEL #3

PARCEL #3

PARCEL #3

PARCEL #3

PARCEL #3

PARCEL #3

PARCEL #3

PARCEL #3

PARCEL #3

PARCEL #3

PARCEL #3

PARCEL #3

PARCEL #3

PARCEL #3

PARCEL #3

PARCEL #3

PARCEL #3

PARCEL #3

PARCEL #3

PARCEL #3

PARCEL #3

PARCEL #3

PARCEL #3

PARCEL #3

PARCEL #3

PARCEL #3

PARCEL #3

PARCEL #3

PARCEL #3

PARCEL #3

PARCEL #3

PARCEL #3

PARCEL #3

PARCEL #3

PARCEL #3

PARCEL #3

PARCEL #3

PARCEL #3

PARCEL #3

PARCEL #3

PARCEL #3

PARCEL #3

PARCEL #3

PARCEL #3

PARCEL #3

PARCEL #3

PARCEL #3

PARCEL #3

PARCEL #3

PARCEL #3

PARCEL #3

PARCEL #3

PARCEL #3

PARCEL #3

PARCEL #3

PARCEL #3

PARCEL #3

PARCEL #3

PARCEL #3

PARCEL #3

PARCEL #3

PARCEL #3

PARCEL #3

PARCEL #3

PARCEL #3

PARCEL #3

PARCEL #3

PARCEL #3

PARCEL #3

PARCEL #3

PARCEL #3

PARCEL #3

PARCEL #3

PARCEL #3

PARCEL #3

PARCEL #3

PARCEL #3

PARCEL #3

PARCEL #3

PARCEL #3

PARCEL #3

PARCEL #3

PARCEL #3

PARCEL #3

PARCEL #3

PARCEL #3

PARCEL #3

PARCEL #3

PARCEL #3

PARCEL #3

PARCEL #3

PARCEL #3

PARCEL #3

PARCEL #3

PARCEL #3

PARCEL #3

PARCEL #3

PARCEL #3

PARCEL #3

PARCEL #3

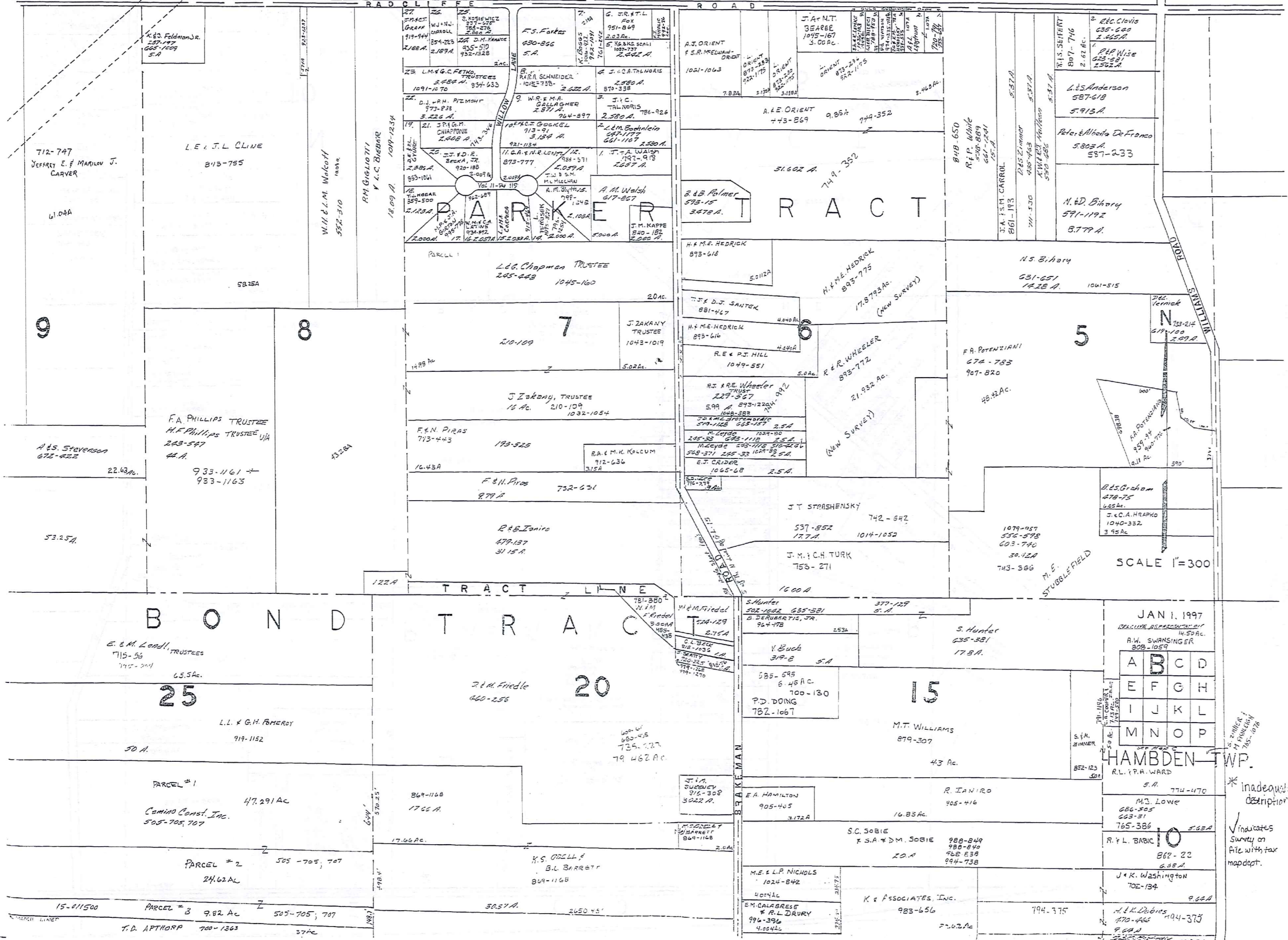
PARCEL #3

PARCEL #3

PARCEL #3

PARCEL #3

L A K E C O U N T Y



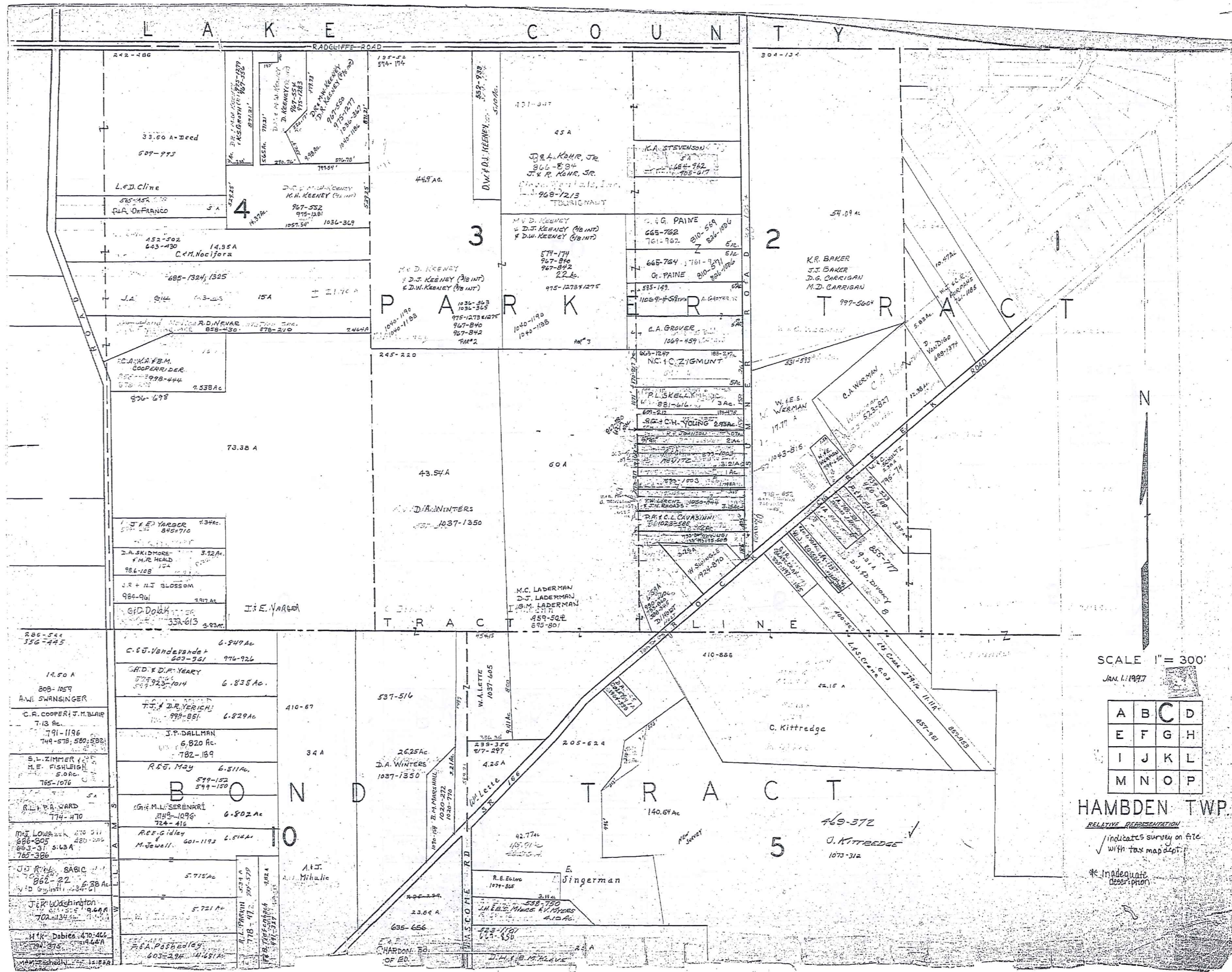
1-800-345-7334
TOWN-REDI
SCALE IN 1/1600 OR AN INCH

JAN 1, 1997
DECLINE REPRESENTATIVE
A.W. SWANSINGER
808-1059

A	B	C	D
E	F	G	H
I	J	K	L
M	N	O	P

HAMBDEN TWP.
R.L. P.A. WARD
S.H. 774-470

* inadequate description
✓ indicates survey on file with tax mapdept.



TRW-REDI
 1-800-345-7334
 SCALE IN 1/10 OF AN INCH

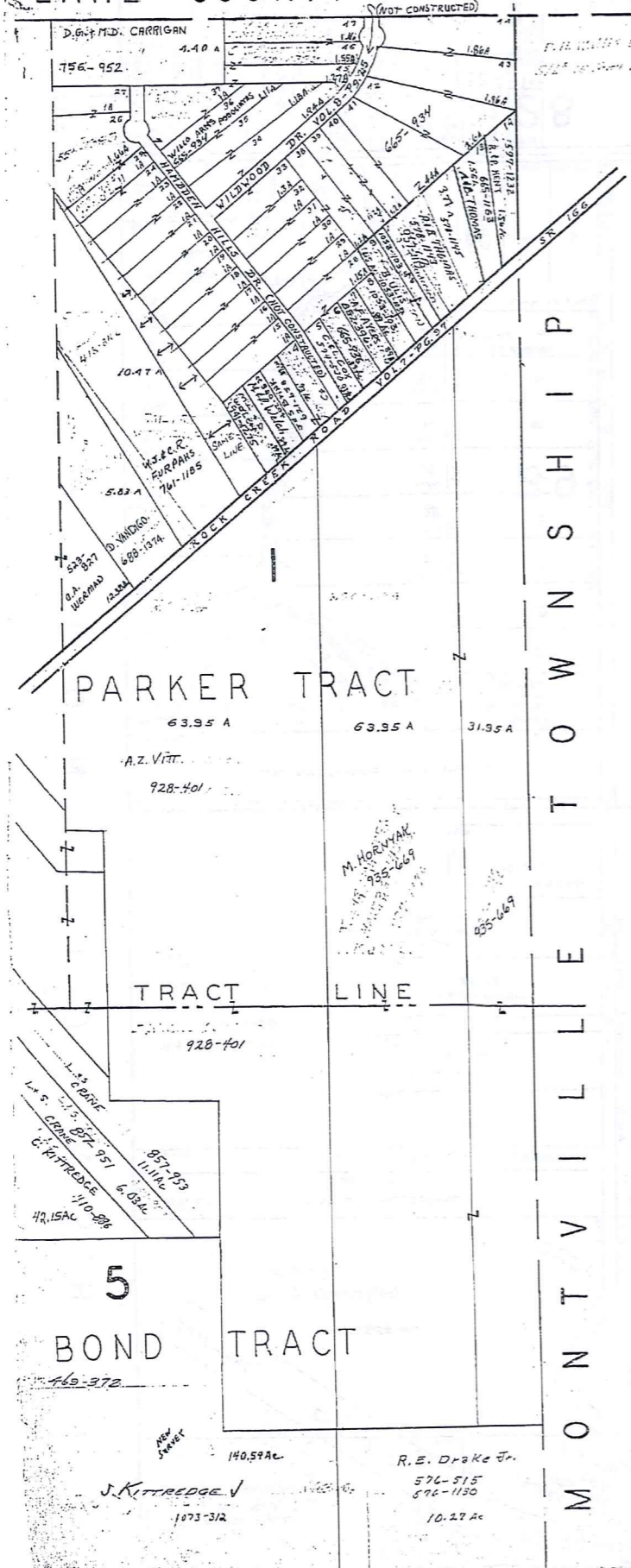
SCALE 1" = 300'
 JAN. 1, 1997

A	B	C	D
E	F	G	H
I	J	K	L
M	N	O	P

HAMBDEN TWP.
 RELATIVE REPRESENTATION
 ✓ indicates survey on file with tax map dept.
 * Inadequate description

LAKE COUNTY

THOMPSON TWP.



M O N T V I L L E T O W N S H I P



SCALE 1" = 300'
 JAN. 1, 1997

A	B	C	D
E	F	G	H
I	J	K	L
M	N	O	P

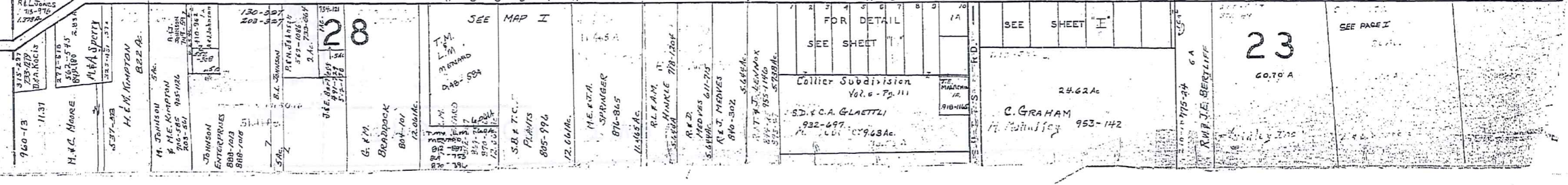
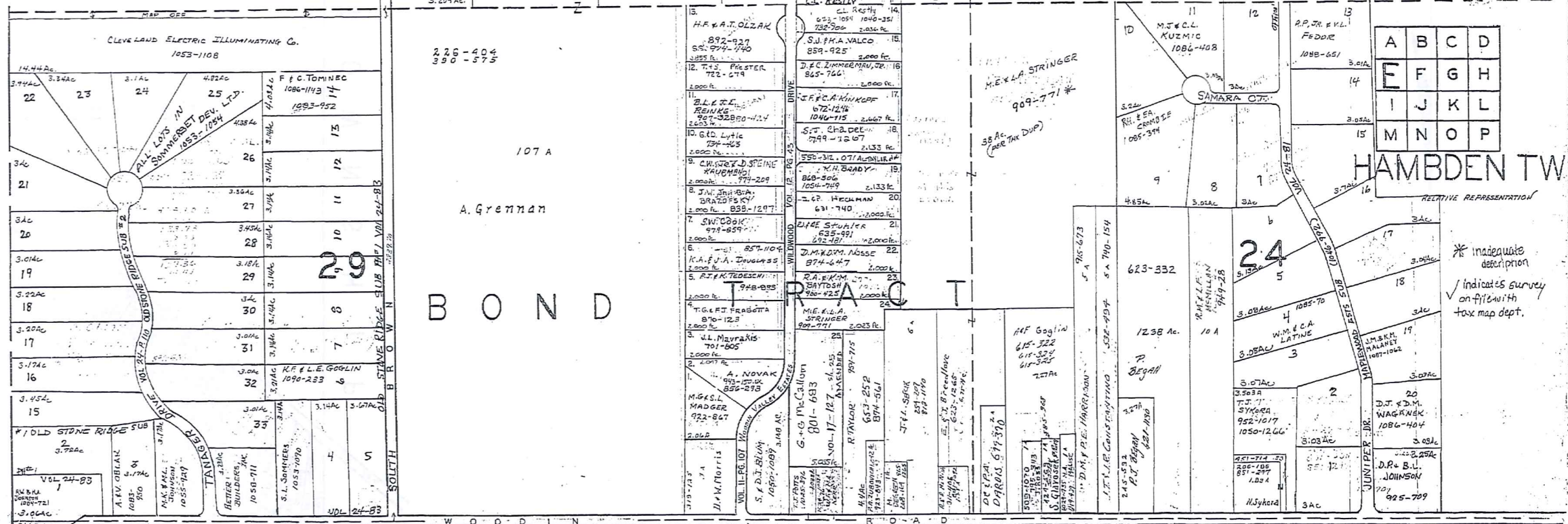
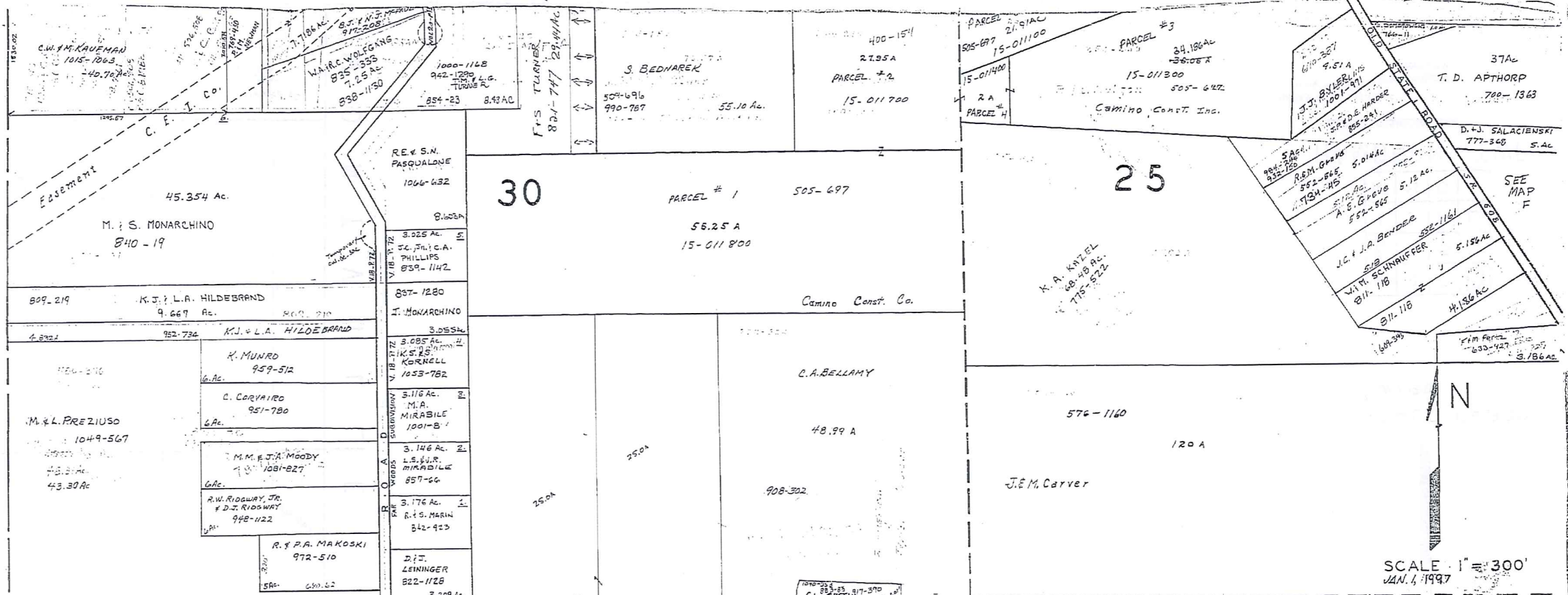
HAMB DEN TWP.

RELATIVE REPRESENTATION

✓ indicates survey on file with tax map dept. * inadequate description

TINW-REED
 1-800-345-7334
 SCALE IN 1/10 OF AN INCH

C H A R D O N T O W N S H I P



SCALE 1" = 300'
JAN. 1, 1997

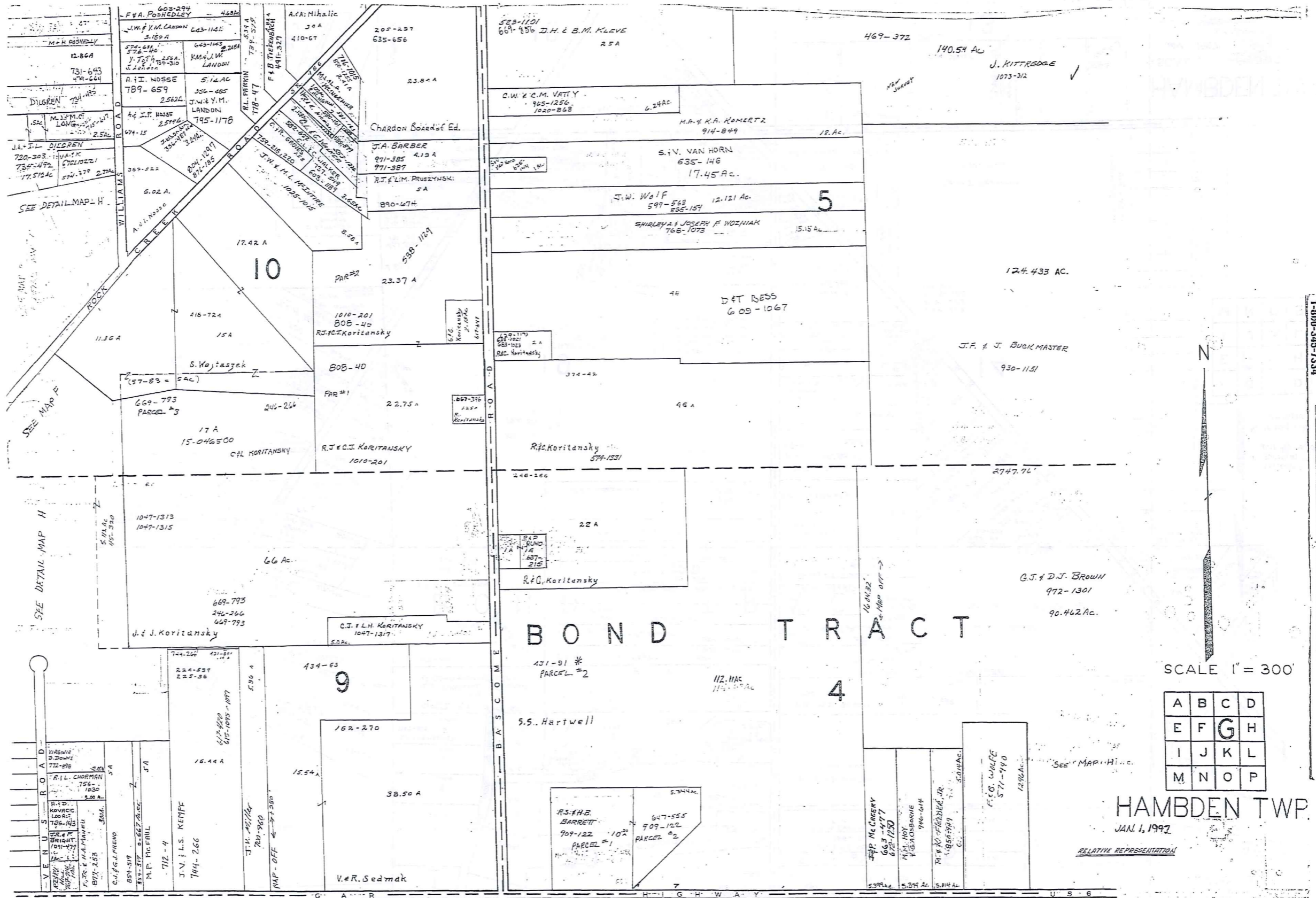
A	B	C	D
E	F	G	H
I	J	K	L
M	N	O	P

HAMB DEN TW

* inadequate description
✓ indicates survey on file with tax map dept.

TWO-REDI
1-800-345-7334

SCALE IN TYP OF AN INCH



TOWN-REID
 1-800-345-7334
 SCALE IN 1/100 OF AN INCH



SCALE 1" = 300'

A	B	C	D
E	F	G	H
I	J	K	L
M	N	O	P

HAMBLEN TWP.
JAN. 1, 1992

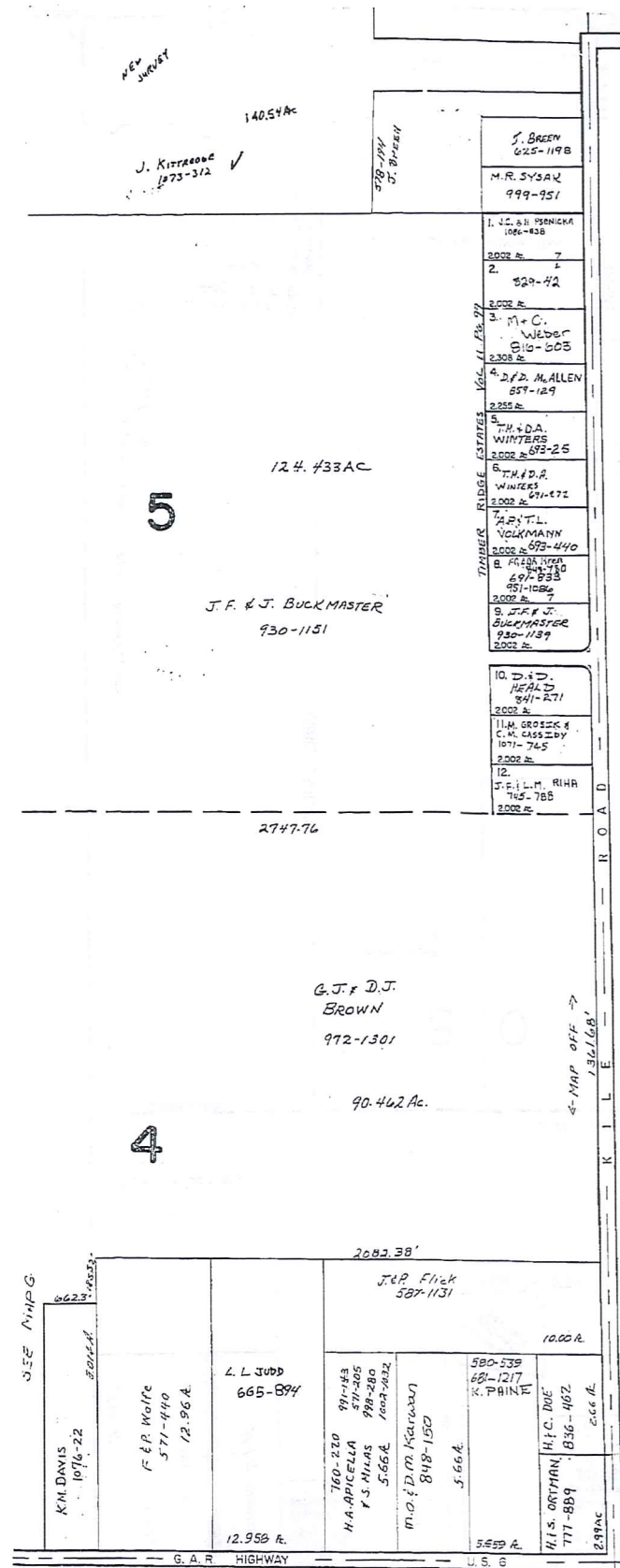
RELATIVE REPRESENTATION

* Inadequate description

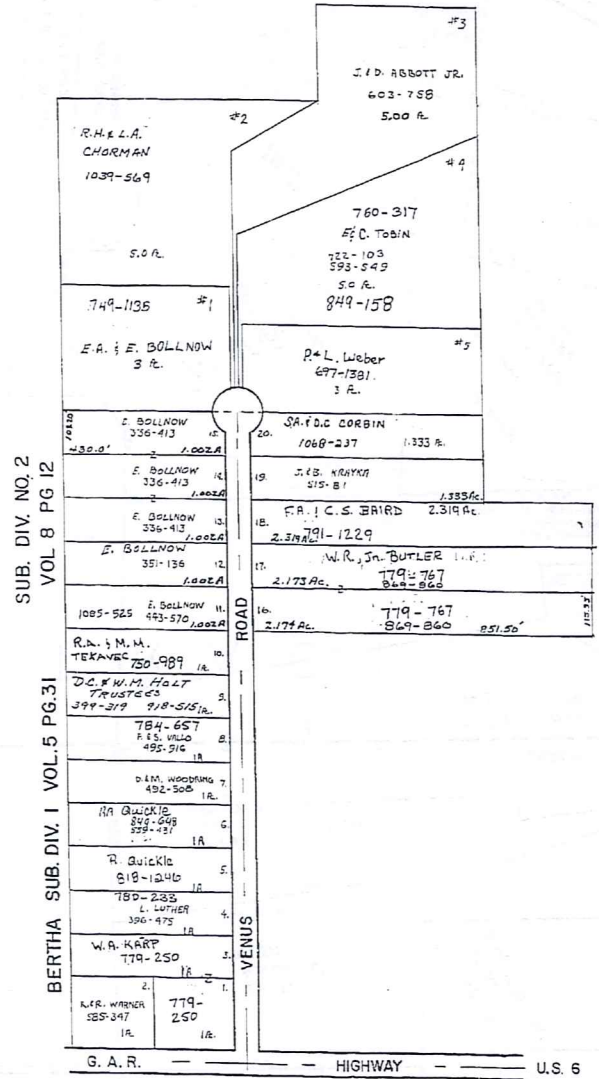
✓ Indicates survey on file with tax map dept.

SEE PAGE "K"

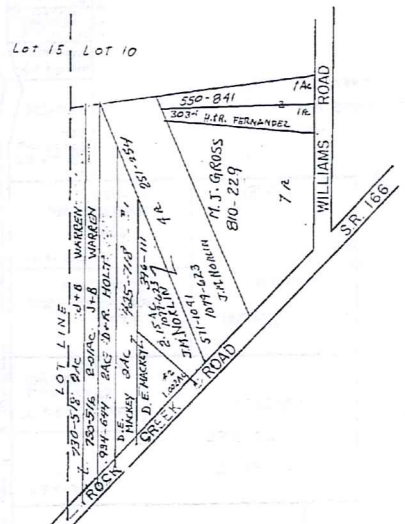
SEE PAGE K



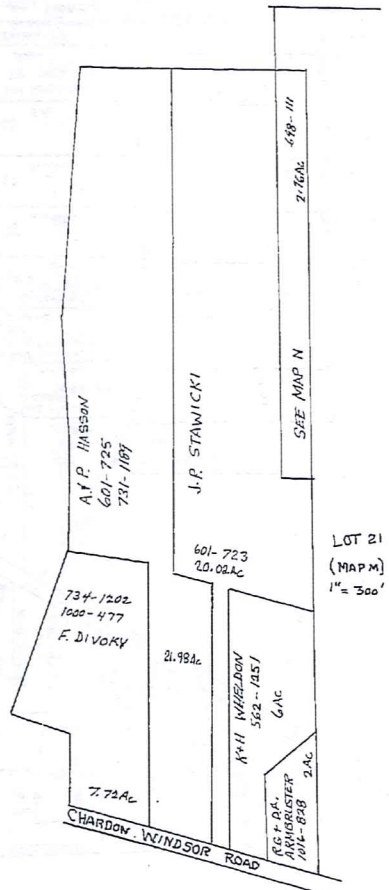
M O N T V I L L E T O W N S H I P



LOT 9 & 14 BOND TR.
SCALE: 1" = 200'



LOT 10 BOND TR.
SCALE: 1" = 300'



LOT 21
(MAP M)
1" = 300'

SCALE 1" = 300'
JAN. 1, 1997.

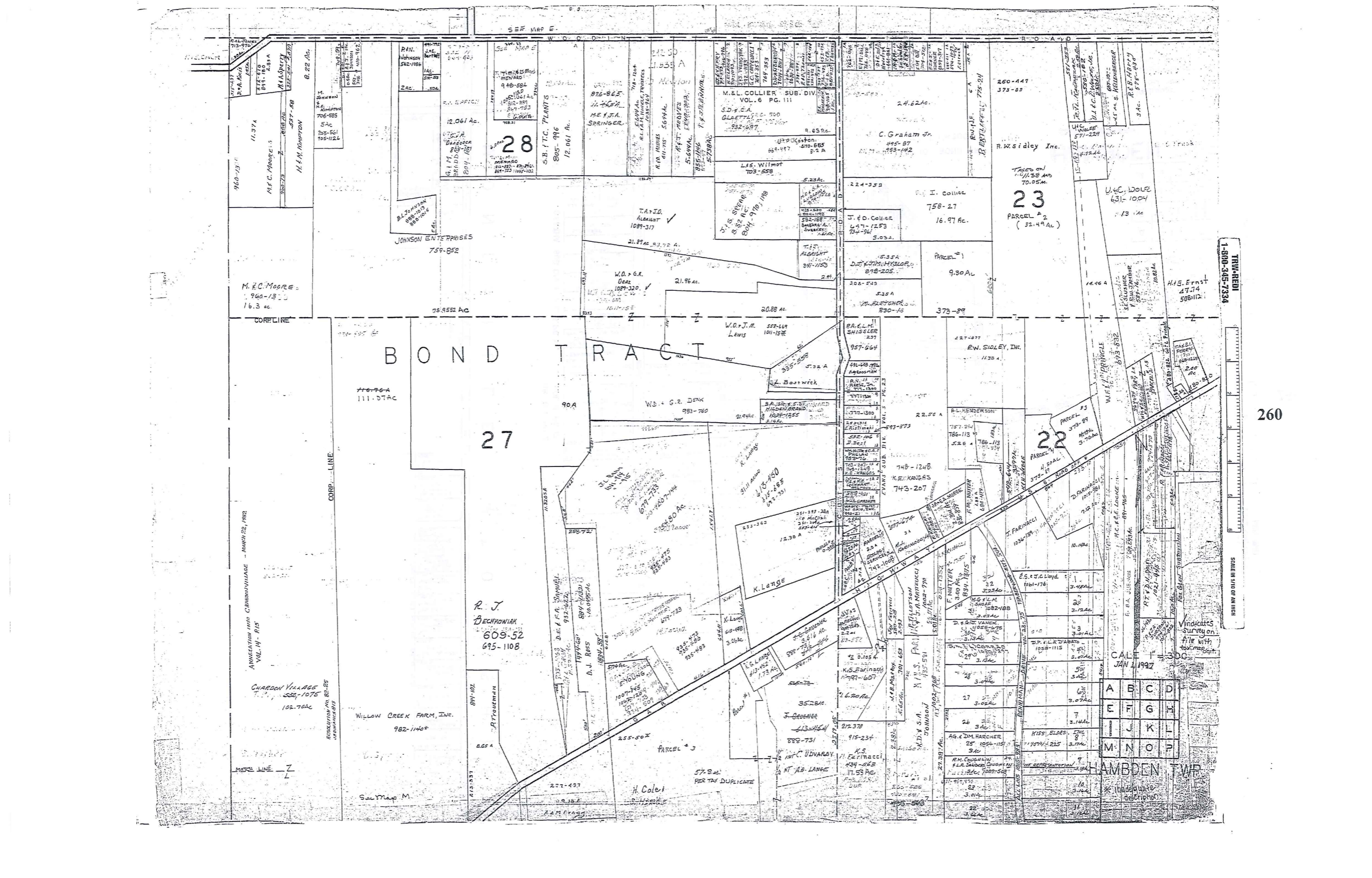
A	B	C	D
E	F	G	H
I	J	K	L
M	N	O	P

HAMB DEN TWP.
RELATIVE REPRESENTATION

* Inadequate description
✓ indicates survey on file with tax map dept.

TPOU-REDI
1-800-345-7334

SCALE IN 1/10 OF AN INCH



BOND TRACT

27

23
PARCEL #2
(52.49 AC)

22

R. J. BECHOWIAK
609-52
695-1108

WILLOW CREEK FARM, INC.
982-1146*

CHARDON VILLAGE
530-1075
102-702

M. R. C. MOORE
960-1300
16.3 ac

M. F. C. MOORE
11.374

C. Graham Jr.
445-87
453-142

R. I. Collier
758-27
16.97 ac

373-89

R.W. SIDLEY, INC.
1130 A

743-207

743-207

743-207

743-207

743-207

743-207

743-207

743-207

A	B	C	D
E	F	G	H
I	J	K	L
M	N	O	P

HAMBLEN TWP

1-500-345-7334

260

SCALE IN 1/16 OF AN INCH

Vindicates survey on file with tax map dept
JAN 4 1997

ANNEXATION INTO CANNONVILLE - MARCH 22, 1982
VOL. 14 - P. 15

CORP. LINE

MARK LINE

See Map M

H. Cole

57.8 ac PER TAX DUPLICATE

17.55 ac

3.0 ac

3.0 ac

3.0 ac

3.0 ac

3.0 ac

3.0 ac

3.0 ac

3.0 ac

3.0 ac

3.0 ac

3.0 ac

3.0 ac

3.0 ac

3.0 ac

3.0 ac

3.0 ac

3.0 ac

3.0 ac

3.0 ac

3.0 ac

3.0 ac

3.0 ac

3.0 ac

3.0 ac

3.0 ac

3.0 ac

3.0 ac

3.0 ac

3.0 ac

3.0 ac

3.0 ac

3.0 ac

3.0 ac

3.0 ac

3.0 ac

3.0 ac

3.0 ac

3.0 ac

3.0 ac

3.0 ac

3.0 ac

3.0 ac

3.0 ac

3.0 ac

3.0 ac

3.0 ac

3.0 ac

3.0 ac

3.0 ac

3.0 ac

3.0 ac

3.0 ac

3.0 ac

3.0 ac

3.0 ac

3.0 ac

3.0 ac

3.0 ac

3.0 ac

3.0 ac

3.0 ac

3.0 ac

3.0 ac

3.0 ac

3.0 ac

3.0 ac

3.0 ac

3.0 ac

3.0 ac

3.0 ac

3.0 ac

3.0 ac

3.0 ac

3.0 ac

3.0 ac

3.0 ac

3.0 ac

3.0 ac

3.0 ac

3.0 ac

3.0 ac

3.0 ac

3.0 ac

3.0 ac

3.0 ac

3.0 ac

3.0 ac

3.0 ac

3.0 ac

3.0 ac

3.0 ac

3.0 ac

3.0 ac

3.0 ac

3.0 ac

3.0 ac

3.0 ac

3.0 ac

3.0 ac

3.0 ac

3.0 ac

3.0 ac

3.0 ac

3.0 ac

3.0 ac

3.0 ac

3.0 ac

3.0 ac

3.0 ac

3.0 ac

3.0 ac

3.0 ac

3.0 ac

3.0 ac

3.0 ac

3.0 ac

3.0 ac

3.0 ac

3.0 ac

3.0 ac

3.0 ac

3.0 ac

3.0 ac

3.0 ac

3.0 ac

3.0 ac

3.0 ac

3.0 ac

3.0 ac

3.0 ac

3.0 ac

3.0 ac

3.0 ac

3.0 ac

3.0 ac

3.0 ac

3.0 ac

3.0 ac

3.0 ac

3.0 ac

3.0 ac

3.0 ac

3.0 ac

3.0 ac

3.0 ac

3.0 ac

3.0 ac

3.0 ac

3.0 ac

3.0 ac

3.0 ac

3.0 ac

3.0 ac

3.0 ac

3.0 ac

3.0 ac

3.0 ac

3.0 ac

3.0 ac

3.0 ac

3.0 ac

3.0 ac

3.0 ac

3.0 ac

3.0 ac

3.0 ac

3.0 ac

3.0 ac

3.0 ac

3.0 ac

3.0 ac

3.0 ac

3.0 ac

3.0 ac

3.0 ac

3.0 ac

3.0 ac

3.0 ac

3.0 ac

3.0 ac

3.0 ac

3.0 ac

3.0 ac

3.0 ac

3.0 ac

3.0 ac

3.0 ac

3.0 ac

3.0 ac

3.0 ac

3.0 ac

3.0 ac

3.0 ac

3.0 ac

3.0 ac

3.0 ac

3.0 ac

3.0 ac

3.0 ac

3.0 ac

3.0 ac

3.0 ac

3.0 ac

3.0 ac

3.0 ac

3.0 ac

3.0 ac

3.0 ac

3.0 ac

3.0 ac

3.0 ac

3.0 ac

3.0 ac

3.0 ac

3.0 ac

3.0 ac

3.0 ac

3.0 ac

3.0 ac

3.0 ac

3.0 ac

3.0 ac

3.0 ac

3.0 ac

3.0 ac

3.0 ac

3.0 ac

3.0 ac

3.0 ac

3.0 ac

3.0 ac

3.0 ac

3.0 ac

3.0 ac

3.0 ac

3.0 ac

3.0 ac

3.0 ac

3.0 ac

3.0 ac

3.0 ac

3.0 ac

3.0 ac

3.0 ac

3.0 ac

3.0 ac

3.0 ac

3.0 ac

3.0 ac

3.0 ac

3.0 ac

3.0 ac

3.0 ac

3.0 ac

3.0 ac

3.0 ac

3.0 ac

3.0 ac

3.0 ac

3.0 ac

3.0 ac

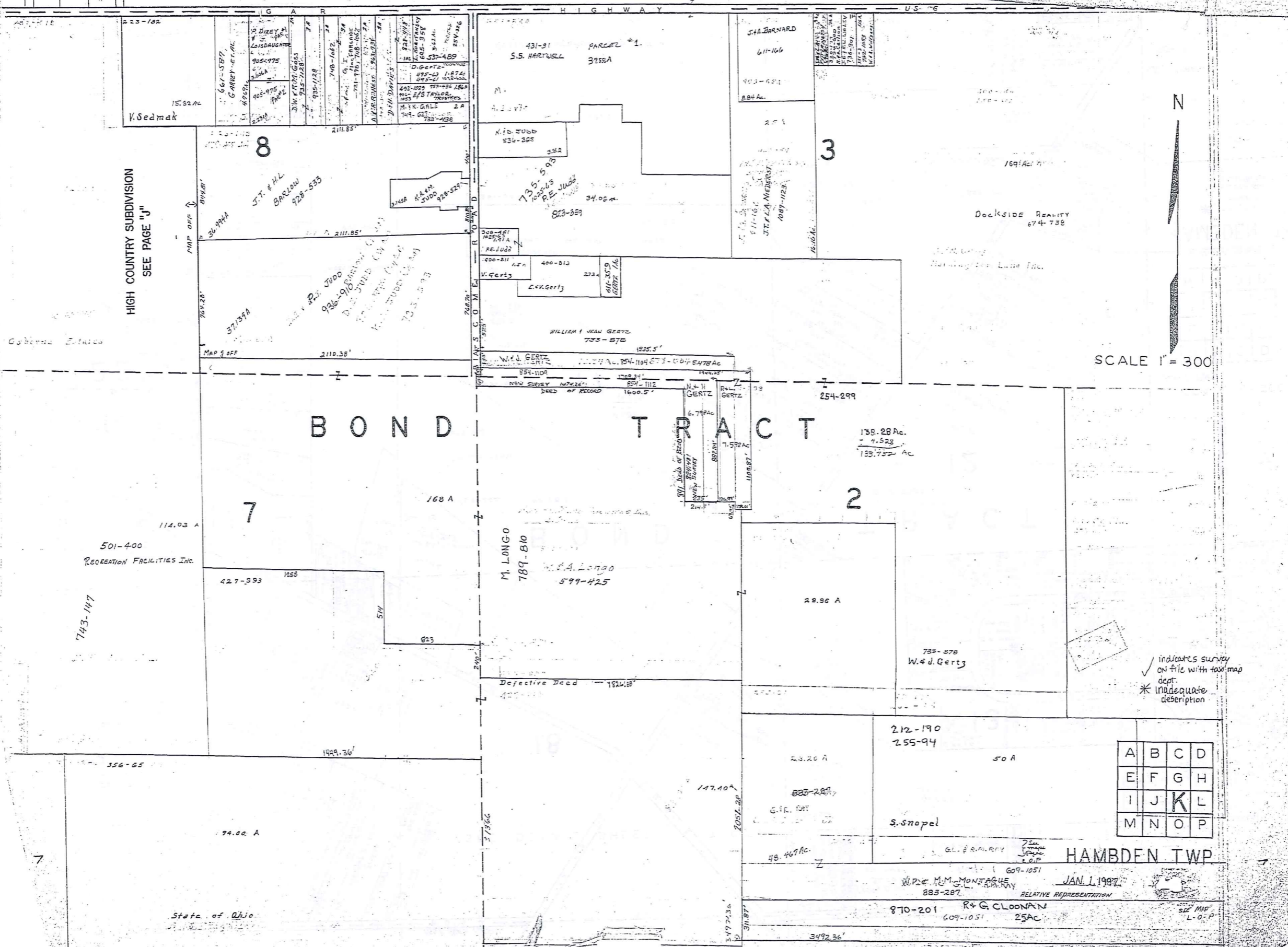
3.0 ac

3.0 ac

3.0 ac

3.0 ac

3.0 ac



HIGH COUNTRY SUBDIVISION
SEE PAGE "J"

SCALE 1" = 300'

indicates survey on file with tax map dept.
* inadequate description

A	B	C	D
E	F	G	H
I	J	K	L
M	N	O	P

HAMB DEN TWP

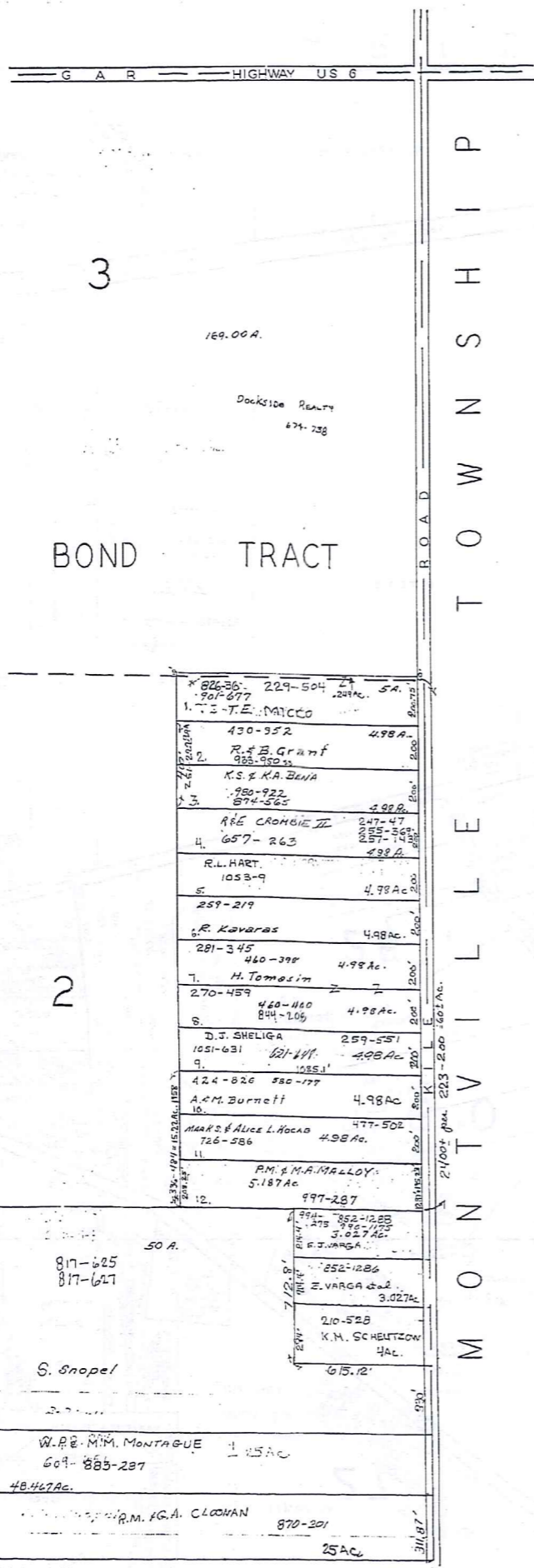
RELATIVE REPRESENTATION
JAN. 1, 1997

R + G CLOONAN
609-1051
25 AC

TRW-REDI
1-800-345-7334



SCALE IN 1/10 OF AN INCH



TRW-REDI
1-800-345-7334

SCALE IN 1/100 OF AN INCH



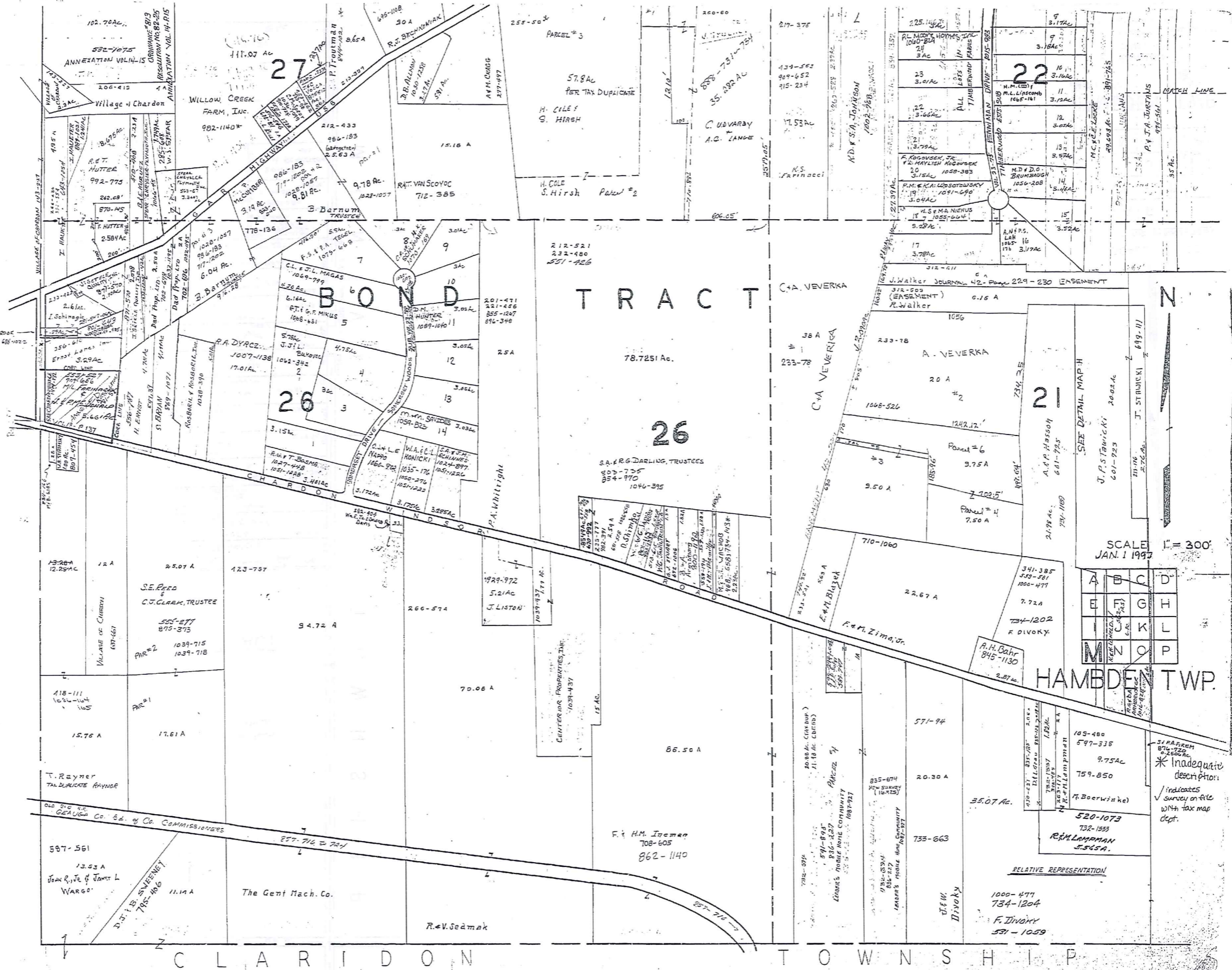
SCALE 1" = 300'
RELATIVE REPRESENTATION

A	B	C	D
E	F	G	H
I	J	K	L
M	N	O	P

HAMBDEN TWP.
JAN 1 1997

* Inadequate description
Indicates survey on file with tax map dept.

CHARDON TOWNSHIP



BOND TRACT

26

22

26

21

SCALE 1" = 300'
JAN. 1 1997

A	B	C	D
E	F	G	H
I	J	K	L
M	N	O	P

HAMBDEN TWP.

TRIM, REED
1-800-345-7334



264

* Inadequate description
 ✓ indicates survey on file with tax map dept.

RELATIVE REPRESENTATION

GEORGIA Co. Bd. of Co. Commissioners

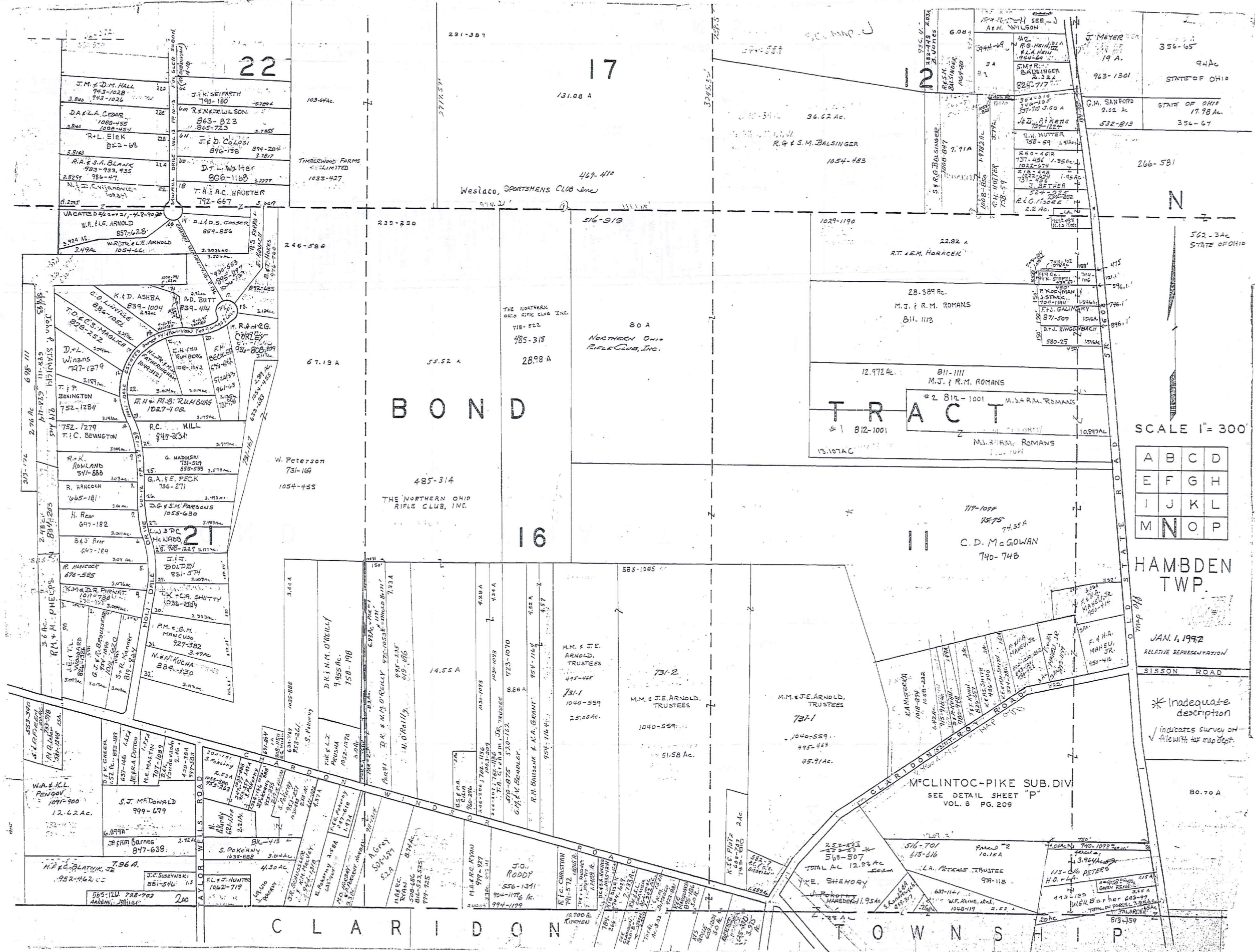
The Gent Mach. Co.

R. V. Seamok

F. Divoky
531-1059

CLARIDON

TOWNSHIP



SCALE 1" = 300'

A	B	C	D
E	F	G	H
I	J	K	L
M	N	O	P

HAMBDEN TWP.

JAN. 1, 1992
RELATIVE REPRESENTATION

* Inadequate description
✓ indicates survey on file with tax map dept.

1-800-345-7334

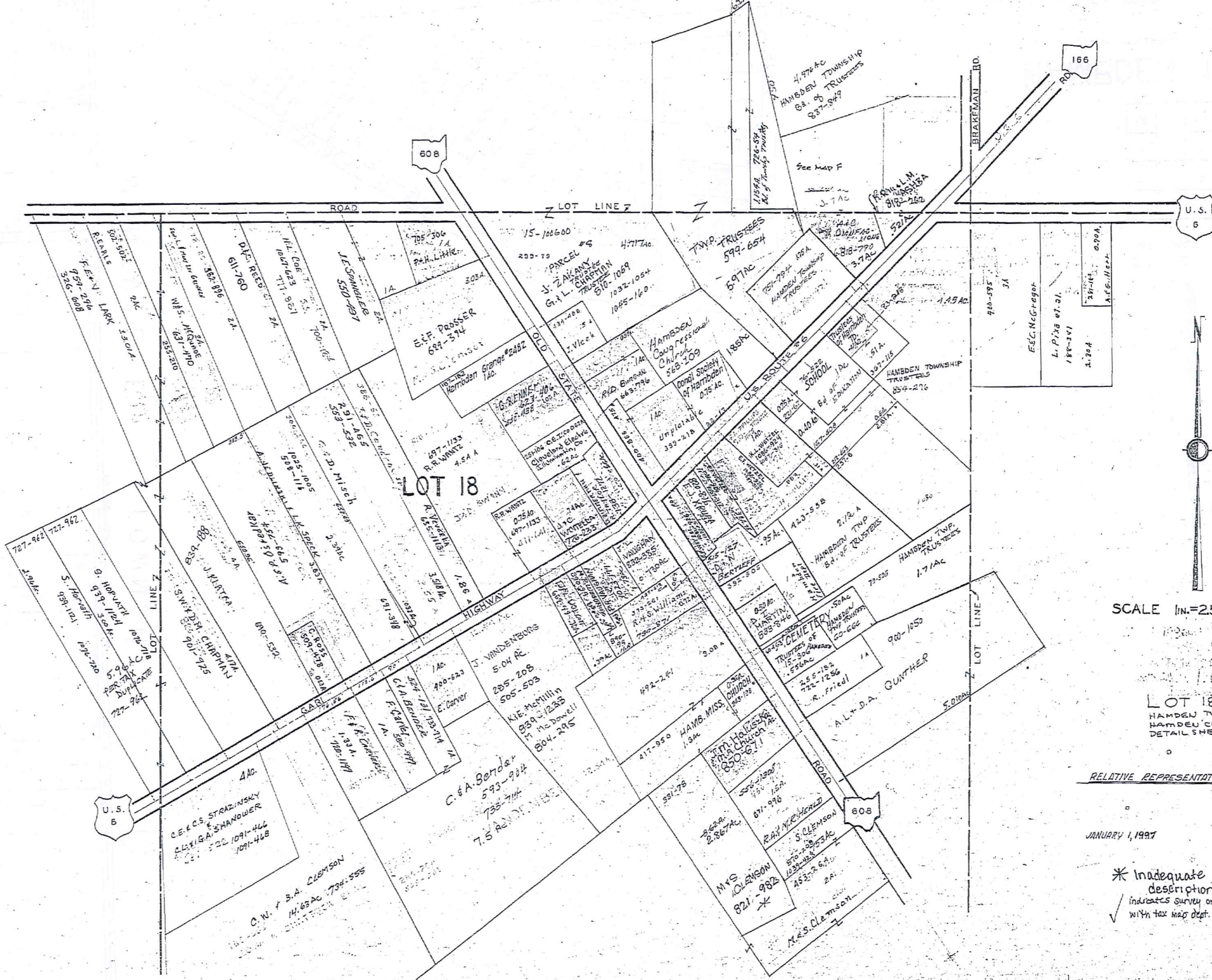


SCALE IN 1/16" OF AN INCH

HAMB DEN CENTER
AND VICINITY

HAMB DEN TP.

HAMB DEN CENTER
AND VICINITY



TRIM-BREDI
1-800-245-7334



SCALE IN 1/16 OF AN INCH



SCALE 1 in. = 25 ch. or 165 ft.

LOT 18
HAMB DEN TWP.
HAMB DEN CENTER
DETAIL SHEET 7 CTR.

RELATIVE REPRESENTATION

JANUARY 1, 1987

* Inadequate description
 ✓ Indicates survey on file with tax map dept.

Explanation and Use Sheet for Geauga County, Ohio

A

SAMPLE (PARTIAL) COUNTY INDEX MAP



Tract Lot Number

Acreage

Township Name

Village Boundary

Street Name

Village Name

Township Boundary

Owners Name

Denotes Continuous Ownership

Deed Book & Page

Map Page Number

Township Name

Village Name

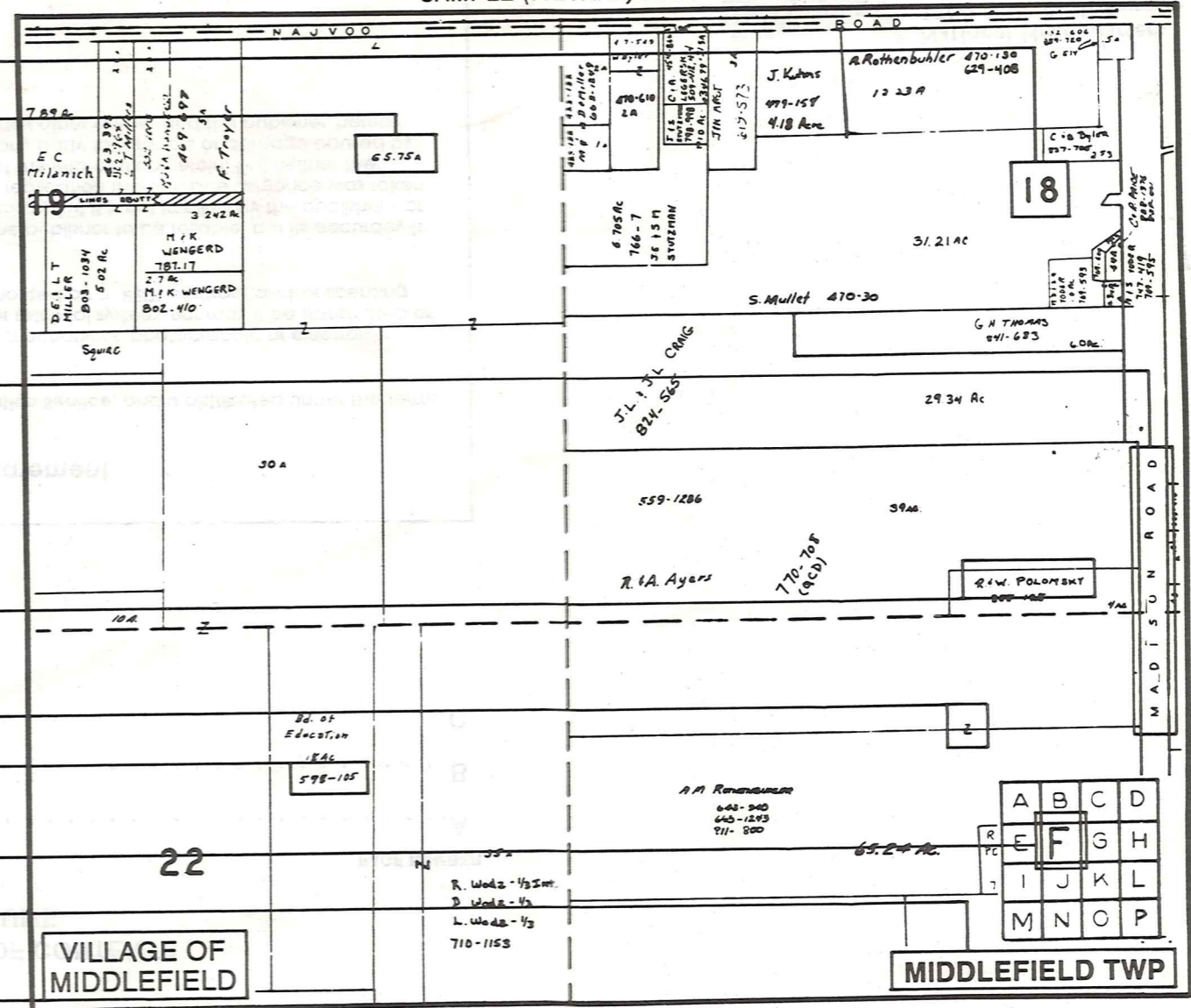
Village Boundary

Street Name

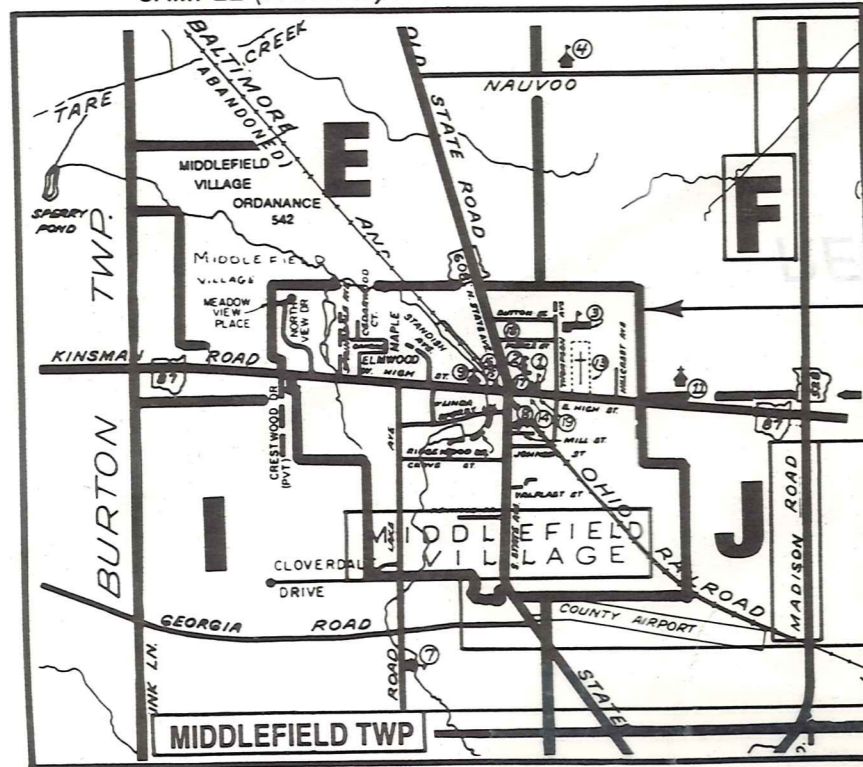
Village Name

Township Name

SAMPLE (PARTIAL) MAP PAGE



SAMPLE (PARTIAL) MUNICIPALITY INDEX MAP



USE OF THE MAP VOLUME

- LOCATE THE GENERAL AREA OF INTEREST ON THE COUNTY INDEX MAP AND NOTE THE MUNICIPALITY NAME (TOWNSHIP OR VILLAGE).
 - REFER TO THE TABLE OF CONTENTS AND NOTE THE BEGINNING ATLAS PAGE NUMBER FOR THE MUNICIPALITY OF INTEREST.
 - TURN TO THE PAGE INDICATED, ON THIS PAGE WILL APPEAR AN INDEX MAP FOR THAT MUNICIPALITY.
 - LOCATE THE GENERAL AREA OF INTEREST AND NOTE THE MAP PAGE NUMBER. THIS MAY BE EITHER A LETTER OR A NUMBER.
 - MAP PAGES ARE IN ALPHABETICAL (OR NUMERICAL) SEQUENCE FOLLOWING THE MUNICIPALITY INDEX MAP. FOLLOW SEQUENCE TO THE MAP PAGE INDICATED.
 - LOCATE SPECIFIC PARCEL OF INTEREST AND NOTE THE DESIRED INFORMATION.
- NOTE: ON SOME MAPS YOU MAY BE REFERRED TO A DETAIL SHEET SHOWING AN ENLARGEMENT OF THE AREA. THESE MAPS ARE FOUND AT THE END OF THE REGULAR MAP PAGES IN EACH MUNICIPALITY IN EITHER ALPHABETICAL OR NUMERICAL SEQUENCE.
- NOTE: CHARDON VILLAGE HAS TITLE SHEETS. TO LOCATE OWNERS NAME, NOTE THE PARCEL NUMBER, REFER TO THE TITLE PAGE FOLLOWING THE MAP OF INTEREST, FOLLOW NUMERICAL SEQUENCE TO THE PARCEL NUMBER OF INTEREST AND NOTE THE DESIRED INFORMATION. IN ALL OTHER MUNICIPALITIES THE OWNERS NAME APPEARS ON THE MAP PAGE.